

West Point WMA Grovers Creek Area



Heard County
333 Acres

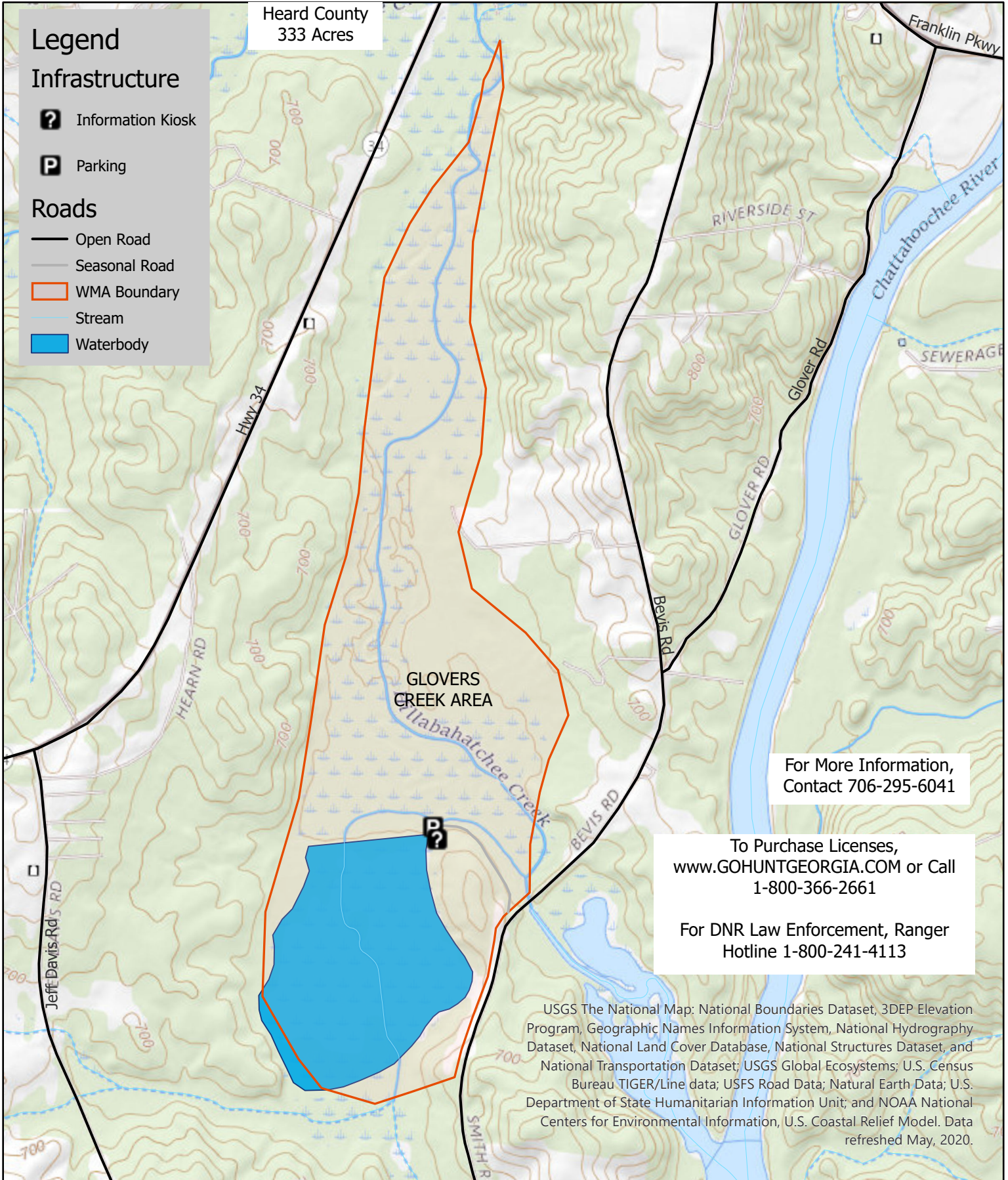
Legend

Infrastructure

- Information Kiosk
- Parking

Roads

- Open Road
- Seasonal Road
- WMA Boundary
- Stream
- Waterbody



For More Information,
Contact 706-295-6041

To Purchase Licenses,
www.GOHUNTGEORGIA.COM or Call
1-800-366-2661

For DNR Law Enforcement, Ranger
Hotline 1-800-241-4113

USGS The National Map: National Boundaries Dataset, 3DEP Elevation Program, Geographic Names Information System, National Hydrography Dataset, National Land Cover Database, National Structures Dataset, and National Transportation Dataset; USGS Global Ecosystems; U.S. Census Bureau TIGER/Line data; USFS Road Data; Natural Earth Data; U.S. Department of State Humanitarian Information Unit; and NOAA National Centers for Environmental Information, U.S. Coastal Relief Model. Data refreshed May, 2020.

0 0.13 0.25 0.5 Miles

Revised May 12, 2021